



Gaviota Coast  
Planning Advisory Committee  
November 18, 2009



**OFFICE OF LONG RANGE PLANNING**

# Gaviota Coast Planning Advisory Committee

November 18, 2009

## Call To Order

1. **The Pledge of Allegiance & Roll Call**
2. **Public Comment Period**
3. **Meeting Minutes from November 4, 2009**
4. **Election of Vice-Chair and Recording Secretary**
5. **Discuss Long-Term Meeting Schedule**
6. **Role, Function and Structure of County Comprehensive Plan and Local Coastal Plan**
7. **Review of Land Use Designations and Overlays within Plan Area**
8. **Adjourn**



# Gaviota Coast Planning Advisory Committee

## November 18, 2009

### **Agenda Item 1:**

#### **A. Pledge of Allegiance**

#### **B. Roll Call**



# Gaviota Coast Planning Advisory Committee

## November 18, 2009

### **Agenda Item 2:**

**Public Comment Period for Items not on the Agenda.**



# Gaviota Coast Planning Advisory Committee

## November 18, 2009

### **Agenda Item 3:**

### **Meeting Minutes from November 4, 2009**



# Gaviota Coast Planning Advisory Committee

## November 18, 2009

### **Agenda Item 4:**

### **Election of Vice-Chair and Recording Secretary**



# Gaviota Coast Planning Advisory Committee

November 18, 2009

## **Agenda Item 5:**

## **Long-Term Meeting Schedule**



# Gaviota Coast Planning Advisory Committee

## November 18, 2009

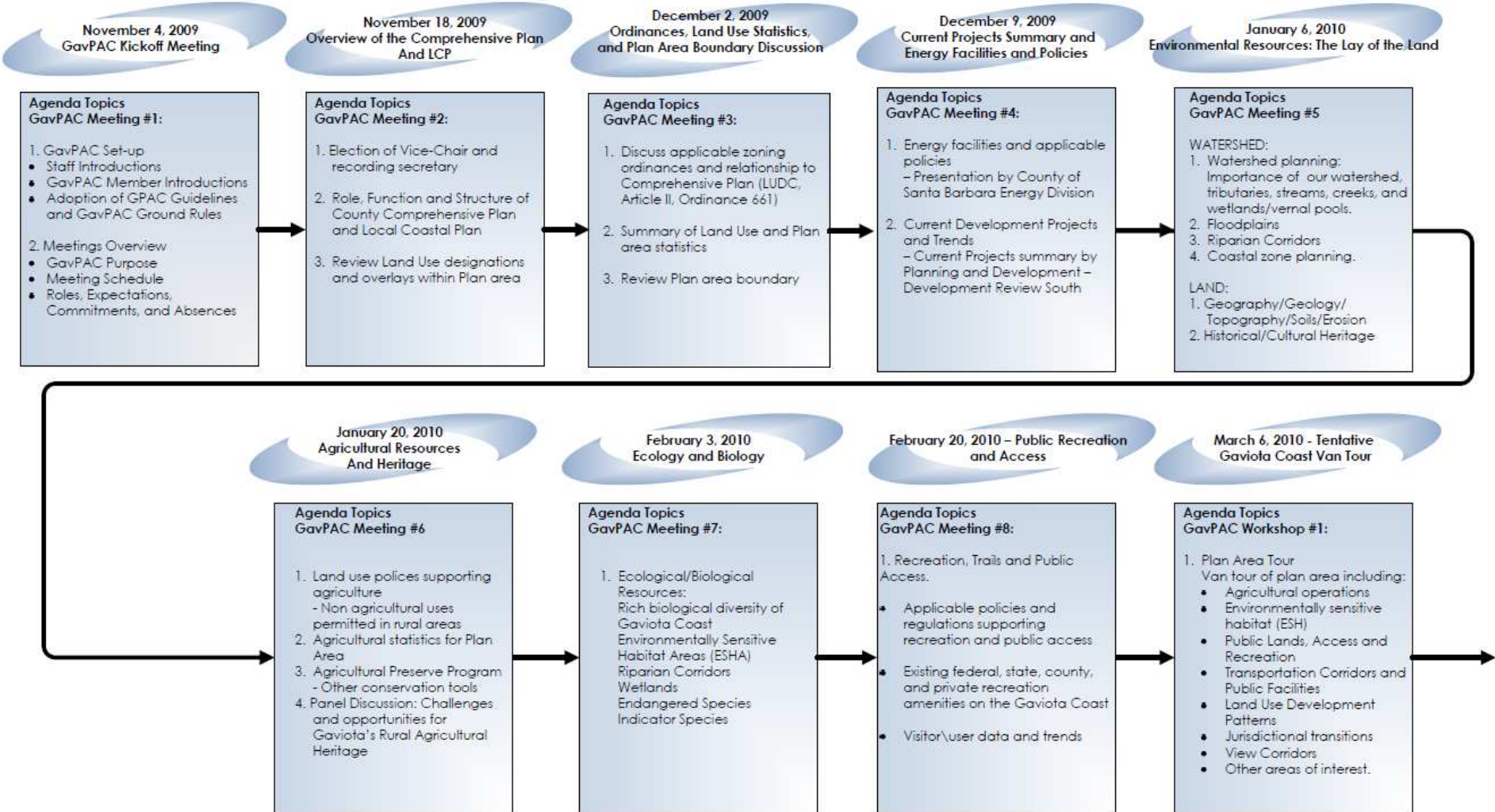
### Scheduled GavPAC Meetings

	Wednesday
November	18
December	2 9
January	6 20

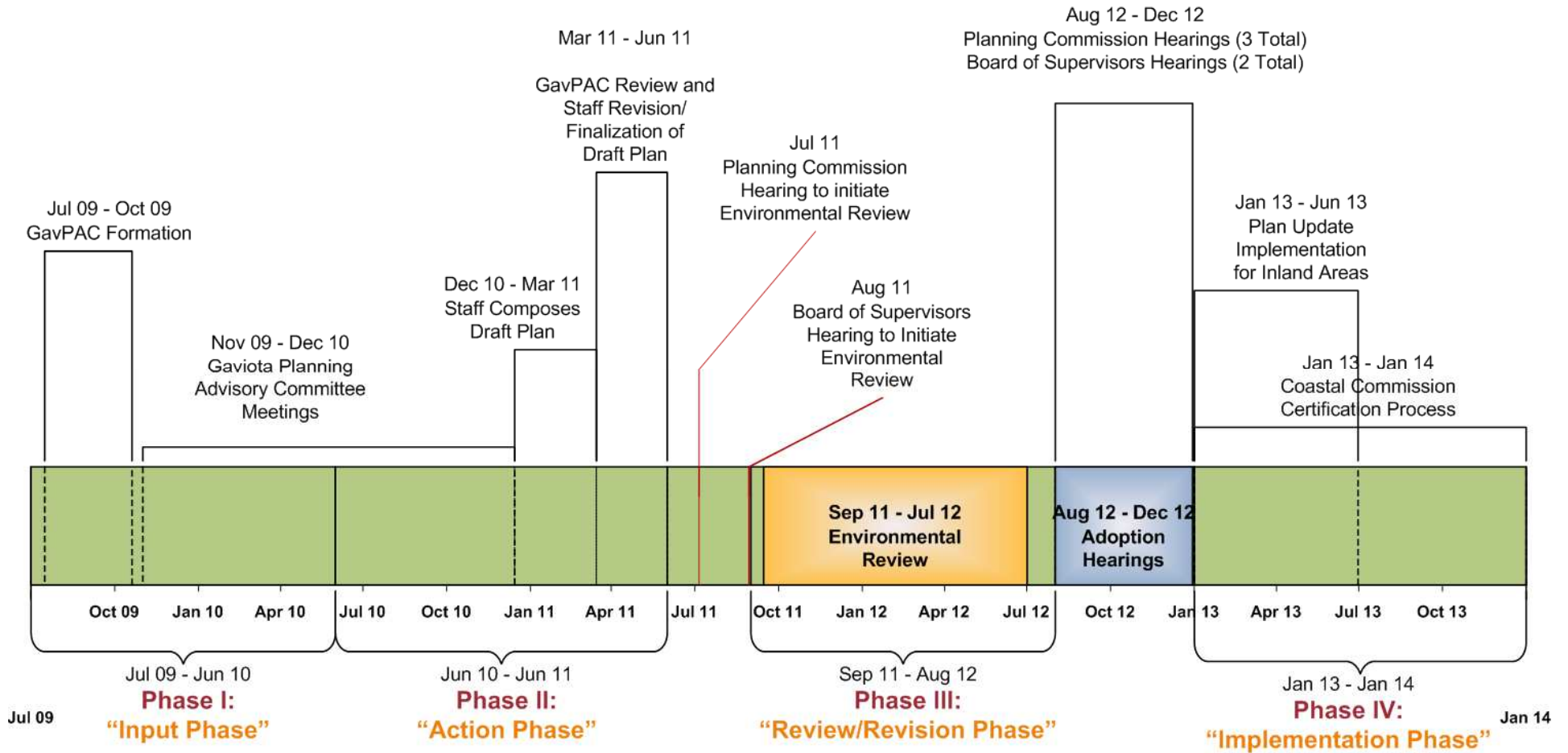


**Phase I:  
Gaviota Coast Plan Advisory  
Committee (GavPAC) Meetings  
and Workshops**

**Gaviota Coast Plan  
Schedule Summary**



# Gaviota Coast Plan Project Timeline



# Gaviota Coast Planning Advisory Committee

November 18, 2009

## **Agenda Item 6:**

### **Role, Function and Structure of County Comprehensive General Plan and Local Coastal Plan**



# Comprehensive General Plan

**The California State Government Code (§65300) requires each city and county to adopt:**

**“a comprehensive, long term general plan...for the physical development of the county or city”**

**The California Supreme Court has called the general plan the “constitution for future development.”**



# Comprehensive General Plan

**The general plan expresses the community's future goals and embodies public policy relative to the distribution of future land uses, circulation networks, housing needs, and public safety**

**Land use actions, zoning, specific plans, and Capital Improvement Plans must be consistent with the adopted general plan**



# Comprehensive General Plan

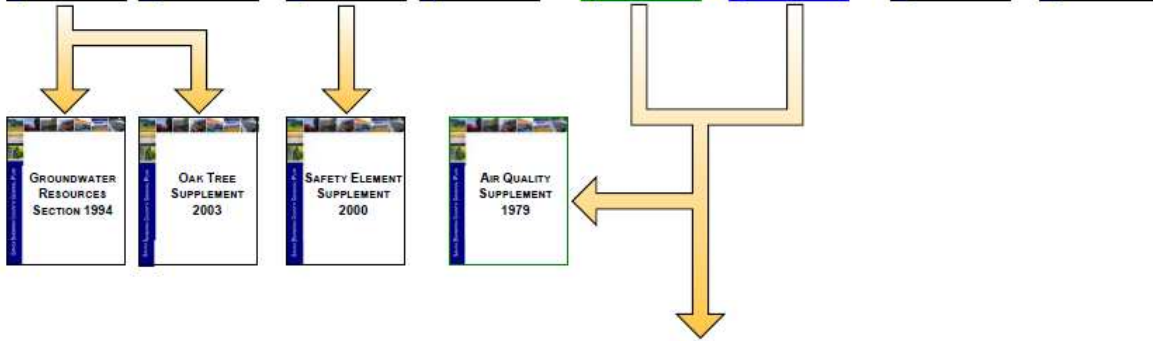
## **The general plan serves to:**

- 1. Identify the community's land use, circulation, environmental, economic, and social goals and policies as they relate to land use and development.**
- 2. Provide a basis for local government decision-making, including decisions on development proposals.**
- 3. Provide citizens with opportunities to participate in the planning and decision-making processes of their communities.**
- 4. Inform citizens, developers, decision-makers, and other agencies of the ground rules that guide development within their community.**



# THE GENERAL PLAN

## MANDATED ELEMENTS



## COMMUNITY AND AREA PLANS: PART OF LAND USE ELEMENT AND/OR COASTAL PLAN



## ADDITIONAL ELEMENTS



## SPECIFIC PLANS



## REDEVELOPMENT



# Comprehensive General Plan

## **General Plan principles:**

- 1. All elements carry equal weight**
- 2. Elements must be internally consistent**
- 3. Elements must be consistent with each other**
- 4. Area Plans must be consistent with the General Plan**



# Community/Area Plans

**Area plans and Community plans focus on a particular region or community within the overall general plan area.**

**Area and community plans are part of the general plan.**

**An area or community plan is adopted by resolution as an amendment to the general plan pursuant to the Government Code (§65350, et seq.)**



## Community/Area Plans

**These plans refine the policies of the general plan to fit the needs of the local area**

**These plans must be internally consistent with the general plan of which they are a part**

**Each area or community plan need not address all of the issues required of general plans**

**These plans may strengthen, but not weaken, requirements contained in the general plan as applied to the study area**



# Plan Relationship

```
graph TD; A[County Comprehensive Plan] --> B[Local Coastal Plan]; B --> C[Area Plan];
```

**County Comprehensive Plan**

**Local Coastal Plan**

**Area Plan**

**Adopts specific goals, policies, and development standards for a unique area in the County  
(may be stand-alone plan or targeted changes to Comprehensive Plan elements)**

# Local Coastal Plan

**The California Coastal Act of 1976 (Public Resources Code §30000, et seq.) was enacted to:**

**“protect, maintain, and, where feasible, enhance and restore the overall quality of the coastal zone environment and its natural and artificial resources”**



## Local Coastal Plan

**The Coastal Act applies to the coastal zone, a strip along the California coast generally “extending seaward to the State’s outer limit of jurisdiction, including all offshore islands, and extending inland generally 1,000 yards from the mean high tide line of the sea” (Public Resources Code §30103).**





## Gaviota Coast Plan Policy Areas

**Special Policy Area**

- Coastal Zone (Article II) - Rural
- Inland (LUDC and Ord. 661) - Rural
- Goleta Community Plan - Coastal Zone (Article II) - Rural
- Goleta Community Plan - Inland (LUDC) - Rural

- Goleta Community Plan - Coastal Zone (Article II) - Urban
- Inland (LUDC) - Inner Rural
- Santa Ynez Valley Community Plan - Inland (LUDC) - Rural
- City
- State of California - UC Regents - UCSB LRDP

- State Parks Non Coastal Zone
- Federal Ownership
- Gaviota Coast Plan Boundary
- Rural Region Boundary
- Los Padres National Forest Boundary

# Local Coastal Plan

**Communities within the coastal zone are required by state law to have an adopted Local Coastal Program (LCP)**

**The County has an approved LCP which contains a Coastal Land Use Plan that was certified by the Coastal Commission in 1981**

**Any amendments to the Plan must be approved by the Coastal Commission**



# Local Coastal Plan

**Similar to the Land Use Element, the Coastal Land Use Plan lays out the general patterns of development throughout areas officially designated within the Coastal Zone of the County.**



# Local Coastal Plan

**Outside of some areas of adopted community plans, the LCP has not been updated since 1981.**

**The main thrust of the LCP, especially as applicable to Gaviota, is to maximize coastal protection and public access to the coast.**



# Gaviota Coast Planning Advisory Committee

November 18, 2009

## **Agenda Item 7:**

### **Review of Land Use Designations and Overlays within Plan Area**



# Land Use Designations/Overlays

**The land use element and local coastal plan designate areas for various base land uses that are referred to as land use designations**

**The land use designation is distinct from Zoning, which is a more detailed expression of allowable, consistent land uses**

**In addition, land use overlays are applied to areas of special circumstance and to trigger specific ordinance provisions**



# Gaviota Coast Planning Advisory Committee

## November 18, 2009

Land Use Designation	Uses
Agriculture II	Farm lands and agricultural uses
Agricultural Commercial	Commercially farmed, privately owned land subject to Williamson Act contract
Recreation	Opportunities for various forms of outdoor recreation
Transportation Corridor	Freeways, highways, streets, roads, bikeways, recreational trails, railroad lines, etc.
Coastal Dependent Industry	Industrial uses which require a site on, or adjacent to, the sea to be able to function



# Gaviota Coast Planning Advisory Committee

## November 18, 2009

Land Use Designation	Uses
Rural Residential	Low density residential development that will preserve the rural character of an area and minimize the services required by smaller lot development
Highway Commercial	Those uses which serve the highway traveler such as hotels, motels, restaurants, garages, and service stations
Educational Facility	Opportunities for various forms of outdoor recreation
Proposed Public or Private Park/Recreational Facility Overlay	Those lands suitable for future inclusion within the recreational designation
Environmentally Sensitive Habitat Area Overlay	Sensitive ecological communities or significant natural habitats



# Gaviota Coast Planning Advisory Committee

## November 18, 2009

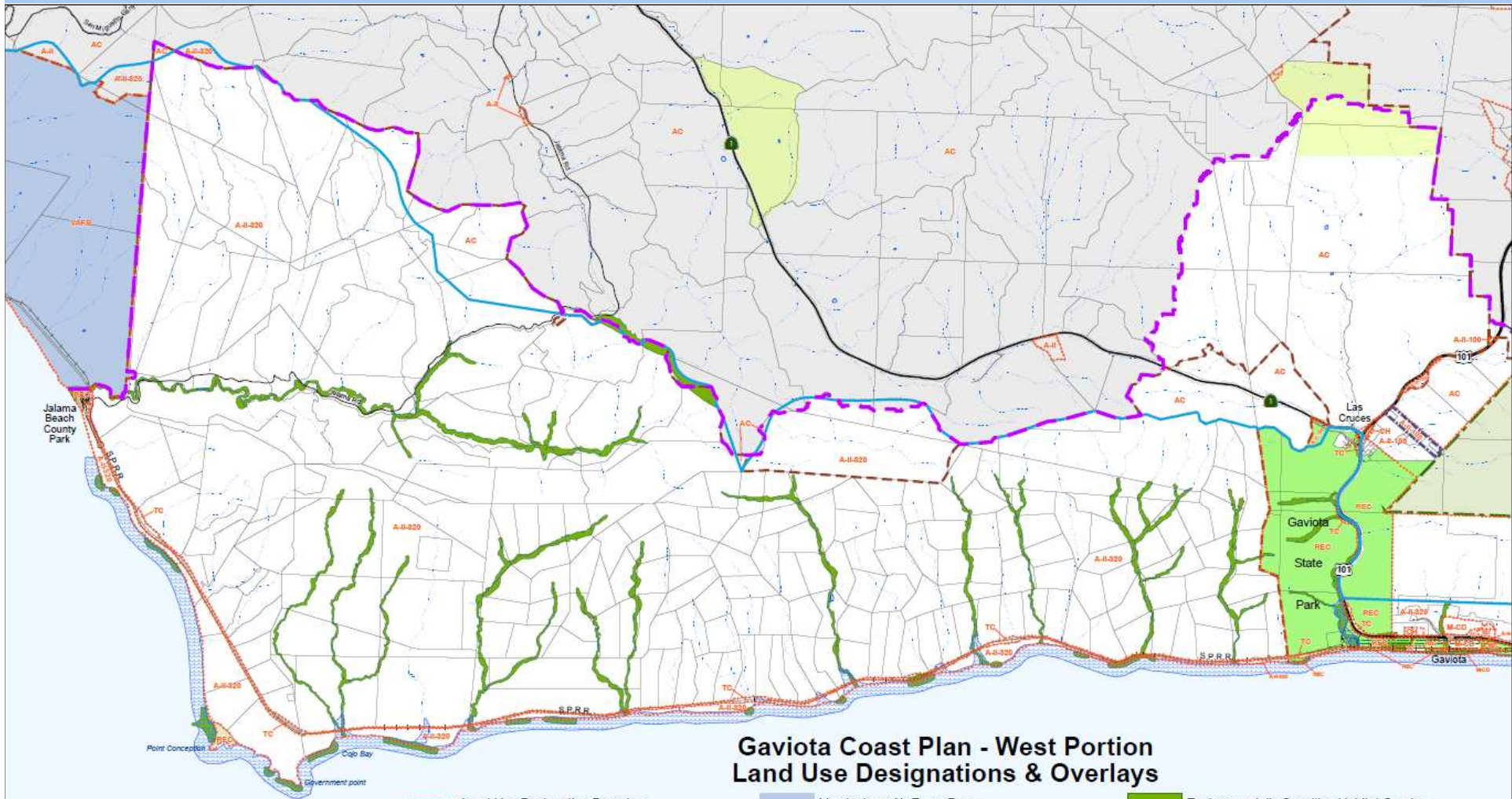
Land Use Designation	Uses
Mineral Resource Area Overlay	An area of known deposit of metallic and non-metallic resources and mineral fuel
Waste Disposal Facility Overlay	An area for the disposal of waste materials
Petroleum Resource Industry Overlay	An area for the processing with or without extraction of petroleum products
View Corridor Overlay	The view corridor overlay delineates areas where there are views from a principal public road to the ocean and along the coast
Flood Hazard Overlay	The flood hazard overlay indicates the 100-year flood plain, which is the largest area inundated by the 100-year flood



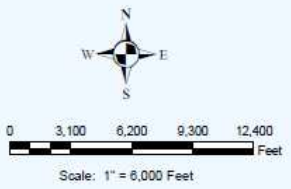
## Land Use Data

Land Use	Acreage	% Acreage
Agriculture	97,472	96.2
Recreation	2,301	2.2
Transportation Corridor	1,201	1.2
Industrial	372	0.3
Other	84	0.1
<b>Total</b>	<b>101,430</b>	<b>100.0</b>
Agricultural Preserve	60,321	59.4
Cultivated Agriculture	3,458	3.4





### Gaviota Coast Plan - West Portion Land Use Designations & Overlays



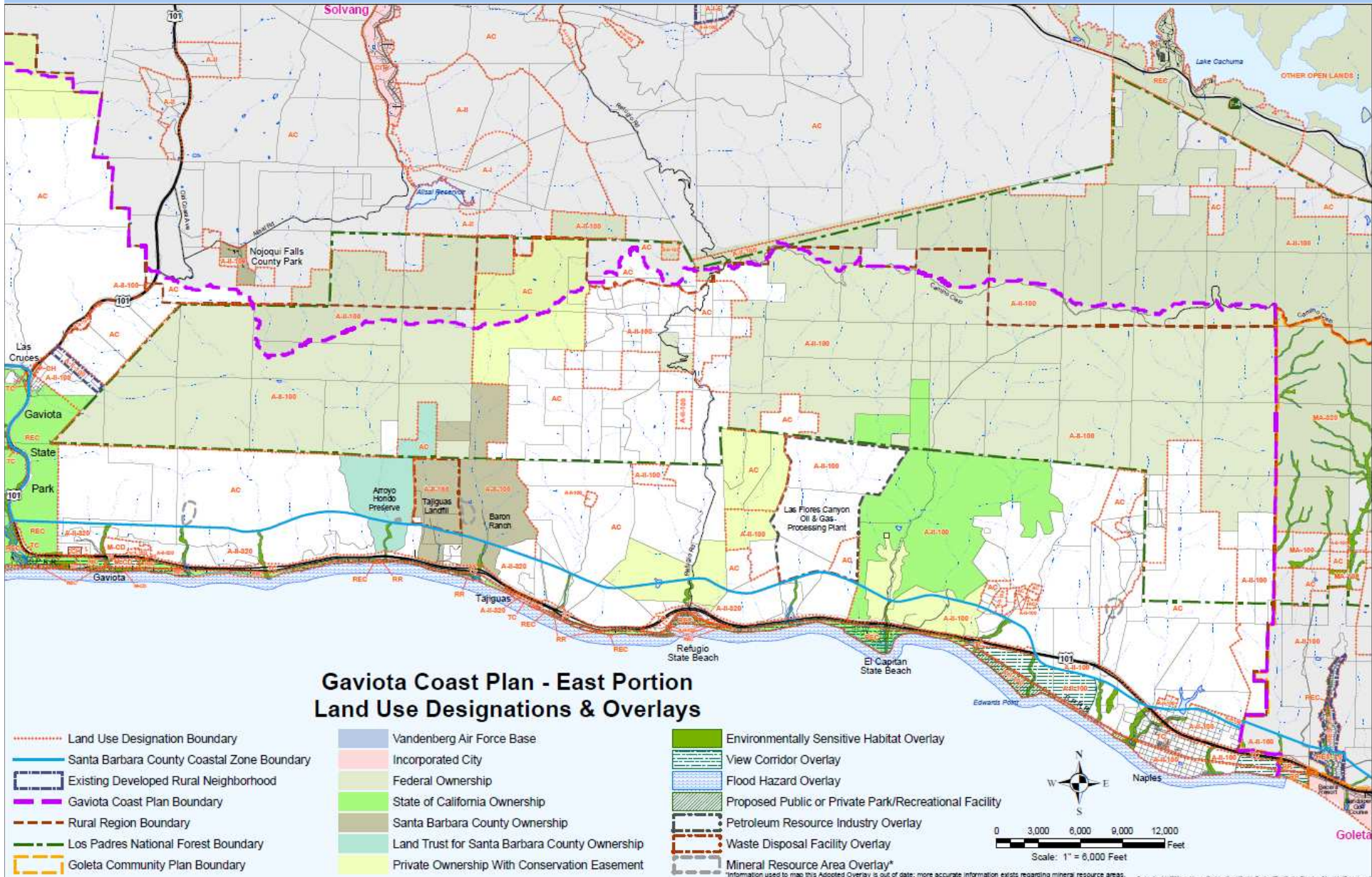
- Land Use Designation Boundary
- Santa Barbara County Coastal Zone Boundary
- Existing Developed Rural Neighborhood
- Gaviota Coast Plan Boundary
- Rural Region Boundary
- Los Padres National Forest Boundary
- Goleta Community Plan Boundary

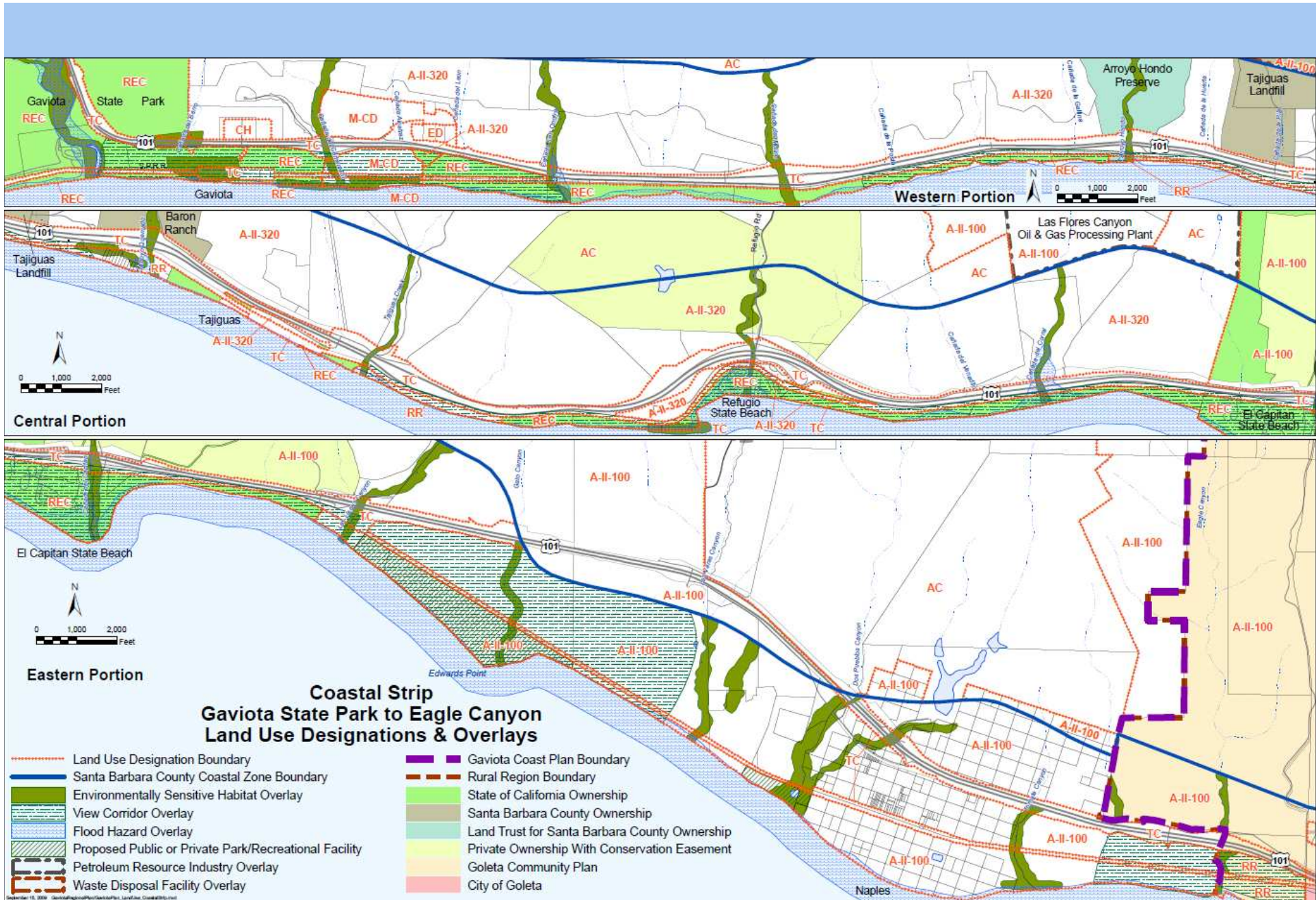
- Vandenberg Air Force Base
- Incorporated City
- Federal Ownership
- State of California Ownership
- Santa Barbara County Ownership
- Land Trust for Santa Barbara County Ownership
- Private Ownership With Conservation Easement

- Environmentally Sensitive Habitat Overlay
- View Corridor Overlay
- Flood Hazard Overlay
- Proposed Public or Private Park/Recreational Facility
- Petroleum Resource Industry Overlay
- Waste Disposal Facility Overlay
- Mineral Resource Area Overlay\*

\*Information used to map this Adopted Overlay is out of date; more accurate information exists regarding mineral resource areas.

September 14, 2009 ar41resqafemsa\_coastplanregionalpartcoastplan\_landuse\_111712area.mxd





# Gaviota Coast Planning Advisory Committee

November 18, 2009

**Next GavPAC Meeting: December 2, 2009**

**Applicable Zoning Ordinances – Relationship To  
Comprehensive Plan**

**Summary of Land Use and Plan Area Statistics**

**Review of Plan Area Boundary**





Thank You

